



PLUMETT

100

YEARS
INNOVATION
AND EXPERTISE

PUSHING THE BOUNDARIES

TO SUPPORT PEOPLE IN THEIR MOST DIFFICULT TASKS

ABOUT US

GENERATOR OF INNOVATIONS

With almost a century of innovations in the field of mechanical solutions, Plumettaz participates in technical progress, eases the workload of people, and provides efficient solutions to increase everyone's comfort. As a pioneer in the production and the sale of equipment for the installation of telecommunications and power cables, connecting people all over the world is our real vocation. There is no broadband internet access and no power supply for our household appliances without Plumett solutions!

With more than 170 employees in Switzerland and at our branches around the world, we aim to satisfy the requirements and needs of our customers by offering innovative, high-performance, and high-quality products and services. From vineyard winches to the most sophisticated blowing machine, every year thousands of Plumett machines leave our 21,000 square foot production facilities in the heart of the Chablais, Vaud region in Switzerland. We are very active at the international level and generate more than 80% of our sales outside Switzerland.

In close cooperation with our customers, we contribute to the transformation of the agricultural, building, rail, energy, and telecommunications sectors. Our loyal customers appreciate our know-how, quality, robustness, and ingenuity of our solutions.

"Our 100 years of continuous innovation have earned us the trust of numerous customers around the world. And to secure this leading position in our various markets, we are focusing on the development of smart machines and the digitalization of our services!"



PHILIPPE PRAT
CEO

**“ PLUMETTAZ IS A GLOBAL LEADER
IN THE DESIGN, THE PRODUCTION
AND THE DISTRIBUTION
OF INSTALLATION EQUIPMENT
FOR TELECOMMUNICATIONS
AND POWER CABLES.**



HISTORY

T I M E



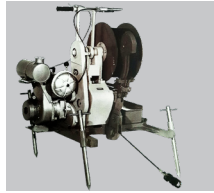
1923

Incorporation of PLUMETTAZ mécanique by Emile Plumettaz in Vevey



1947

Incorporation of PLUMETTAZ SA and relocation to Bex



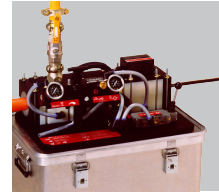
1966

Launch of the TL-15 and TL-20 winches



1981

Launch of the Kässbohrer snowgroomer winch



1988

Emergence of the cable blowing technique



2004

Launch of the Watucab™

100 YEARS OF HISTORY!

Since 1923, we have been conquering the world with our innovative power in the fields of agriculture, building, rail, energy, and telecommunications.

Our vocation has always been to ease the workload of people through mechanical innovations like capstan winches used in the viticultural industry, snowgrooming machines, the maintenance of facades... as well as oil circulators and level crossing barriers for the railway industry. Since 1953, our business of designing and supplying equipment for the installation of underground telecommunications and power cables has become leading.

In 1930, located in Vevey, we witnessed the plight of the winegrowers working on the hillsides of the region. For them, we envisioned that the ploughs would no longer be pulled by people, but by capstan winches installed overhead and easily transportable.

The installation of cables was usually done by pulling. Since 1987, based on our Jetting patents, we have been developing the pushing of cables into underground pipes through air injection. The installation of cables over much longer distances is becoming a reality. Today we are the world leader and set the standard in the field of cable jetting.

By adapting the water injection to the Jetting techniques, we are pushing the boundaries of low, medium, and high voltage power cable installation, in particular to meet the renewable energy requirements brought about by onshore and offshore wind farms. Our floating installation technique facilitates the connection of offshore wind turbines close to the coast. Clean energy is becoming more accessible.

We adapt to the technological developments both for our internal process optimization and for those of our customers. With the launch of the OptiJet™, the jetting machine becomes smart and connected to offer users unparalleled ease and safety of use.

LINE



2017
Launch of the Intelli-Jet™



2020
Acquisition of HMS machines BV & Infrar-ent BV in the Netherlands



2021
Launch of the Opti-Jet™



2021
Launch of the E-Winch



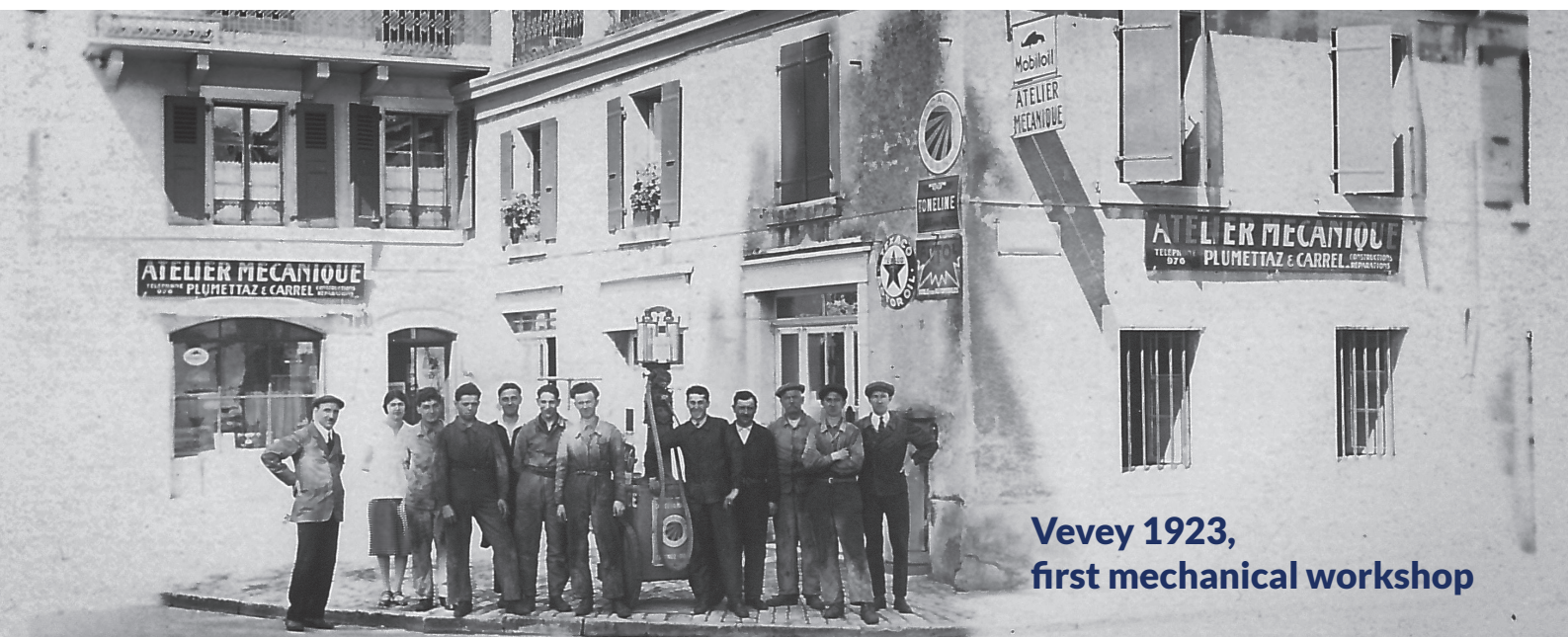
2022
Launch of the Digital Services



2022
Acquisition of Jakob Thaler GmbH



2023
Centenary of Plumettaz!



Vevey 1923,
first mechanical workshop



Bex 1947,
new Plumettaz factory



TELECOMMUNICATIONS

ALWAYS AVAILABLE

Our pneumatic, hydraulic, and electric equipment is used for the installation of telecommunications cables by blowing or floating in pre-installed underground pipes, in open trench, in ducts or in galleries. The deployment of fiber broadband is considerable and necessary to stay permanently connected to the outside world and to offer a future with countless opportunities for innovative services.

We offer a machine for each and every infrastructure. Designed and developed with passion and professionalism at our technical offices, they satisfy the demanding needs of our customers, ensuring ease of use and robustness to guarantee quality installation without the risk of damaging the cable.

For these reasons, more than 10,000 cable installation machines are currently in operation at the sites of our customers around the world.





OPTIJET™

With our new compact and smart machine, the installation of mini cables through blowing becomes accessible to everyone. The OptiJet™ is easily transportable, simple to use, and autonomous thanks to its battery power. Its on-board tablet, which can withstand all the constraints of the site, enables the supervision and implementation of the cable installation, whilst ensuring impeccable quality of work.

SMART AND CONNECTED TECHNOLOGY

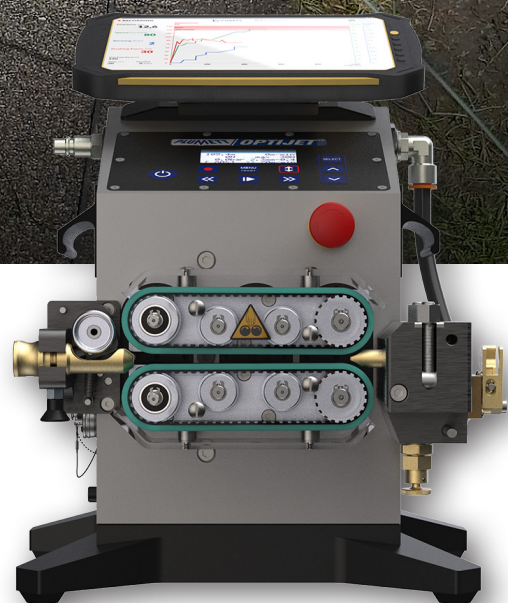
The OptiJet™ is a new smart machine platform designed to make the work of the operator easier and to allow the supervisor to always have an eye on his machine.

Its smart, on-board sensors allow for continuous monitoring of the pushing force and slipping between the cable and the belts, with an automatic shut-down if the acceptable limit is exceeded to prevent damage to the cable.

Its electric motor and specially designed belts significantly reduce the noise emitted by the machine and limit its maintenance. With no need to use the air compressor to power the engine of the machine, CO₂ emissions are reduced at the site.

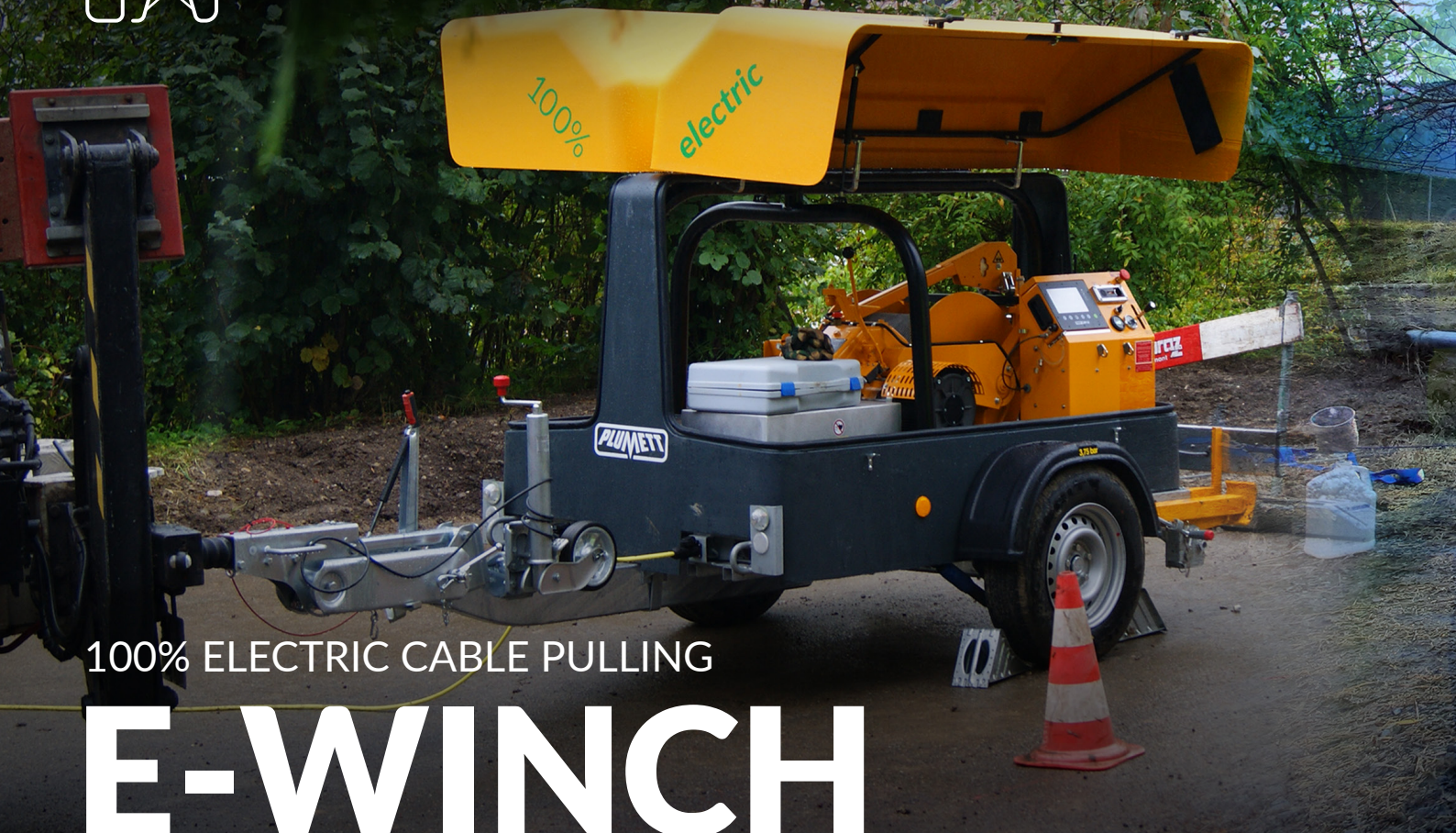
Its unique automatic “crash test” function of the pushing force and the radial force on the cable ensures the best performance for the cable installation whilst protecting it. With its capable installation speed greater than 300ft./min, the OptiJet™ is highly efficient and assists in minimizing installation time.

Each and every action is recorded in the memory of the machine and a cable installation report is automatically generated at the end of the installation to certify the quality of the work performed. The report is even instantly uploaded to the Connect cloud platform of Plumettaz; making it available online to anyone who needs it (site manager, network owner, etc.).





ENERGY



100% ELECTRIC CABLE PULLING

E-WINCH

Our new E-Winch is powered by two high-powered batteries, allowing the most demanding tasks to be carried out in any condition, without interruption, and with minimum disturbance.

GREEN ENERGY AND ZERO EMISSION

The E-Winch is the latest innovation of our 100% electric industrial winch systems. Compact and lightweight, it can be used in areas where noise and CO₂ emissions are limited, e.g; when working at night in urban areas, indoors or in tunnels.

Our conventional capstan winches on a trailer frame are designed for the installation of underground power cables in pre-installed pipes or open trenches. Robust and easy to use, they save cable installers time and require a minimum amount of manpower to operate them.

Its MP 50 on-board electronic assistant allows for the visualization and recording of the various installation parameters and supervises the pulling / pushing force. The quality of the work performed can thus be certified by a cable installation report automatically generated by the machine.

The E-Winch can also be connected to the Connect cloud platform of Plumettaz to allow for remote monitoring of the machine from any location at any time.



THE INSTALLATION OF UNDERGROUND POWER CABLES

WATUCAB™

Our Watucab™ solution combines the power of water and a compact pusher to effortlessly drive power cables over any route, flat or mountainous, on land or sea bed.

AT THE FOREFRONT OF TECHNOLOGY

Power distribution cables are easily installed using the Watucab™ method, a versatile, high-performance solution that offers unrivaled installation safety and cable protection to satisfy the most demanding requirements. The Watucab™ is designed for the installation of low, medium, and high voltage underground cables, which can weigh up to 30 lbs. per foot!

Particularly effective for long distances and complex layouts, the Watucab™ achieves superior performance compared to conventional installation techniques like winches. In addition, it benefits from the latest technological innovations in terms of connectivity and services: reporting, remote monitoring, planning, etc.

The Watucab™ is the essential solution for connecting wind farms along the coast to the onshore power grid. Offshore wind turbines represent a tremendous energy resource by taking full advantage of the wind energy provided by the seas and the oceans.



RAIL

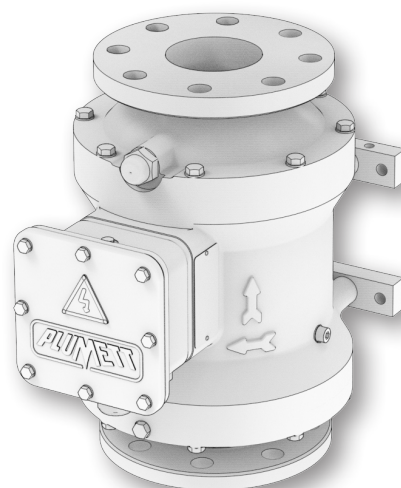
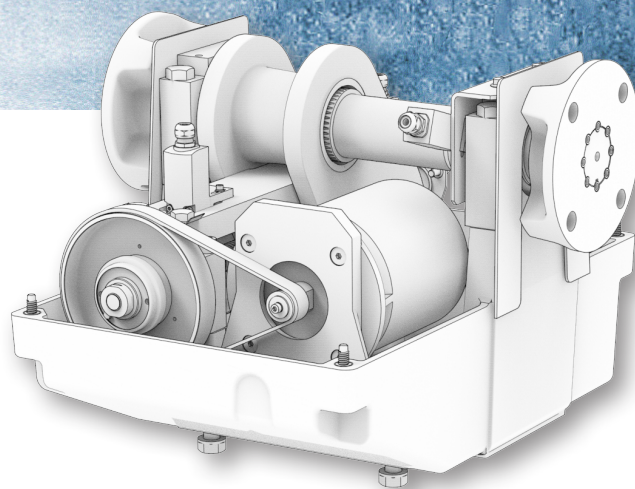


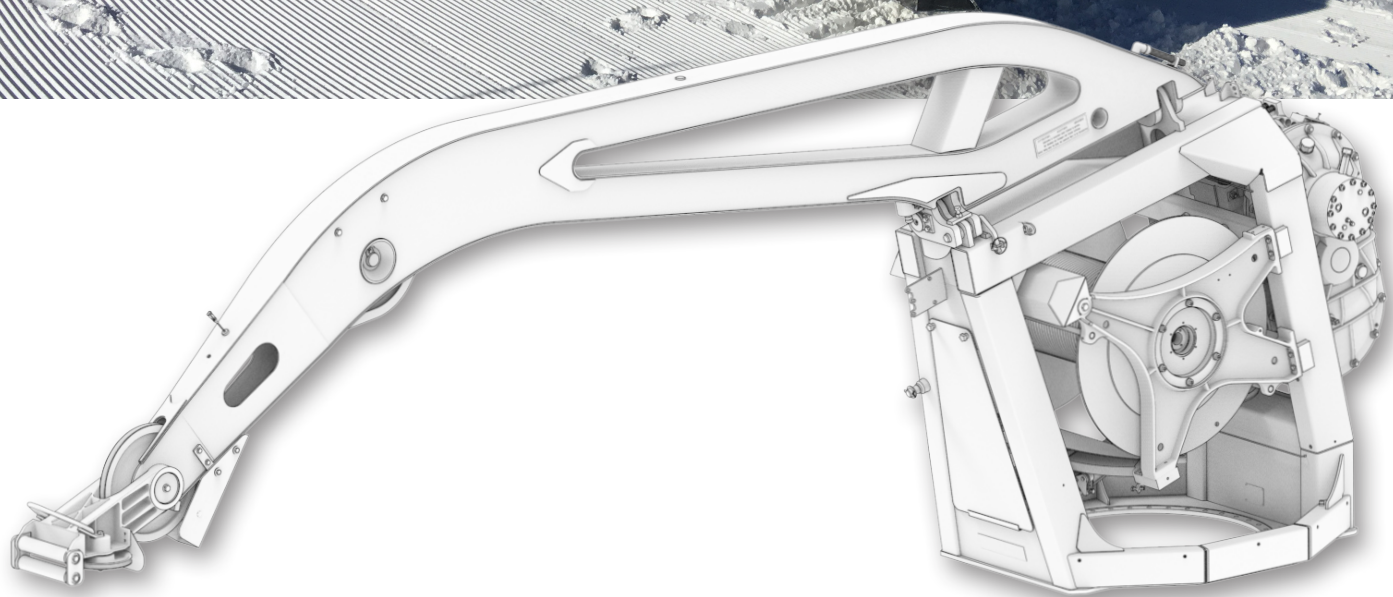
AT THE HEART OF THE RAIL INFRASTRUCTURES

In niche markets like the rail industry, our competencies are indispensable. In partnership with a company specialized in railway signalling, we have developed a drive mechanism for level crossing barriers, the installation of which is necessary to secure the rail and road networks.

These mechanisms are integrated into the control and security architecture of the total solution. Their proven design ensures reliability without fail.

Our product range also includes oil circulators for electric locomotives. The main characteristics of these pumps are their reliability, low weight, small size, and the possibility of installation in any position, directly in the cooling circuit of electric transformers. It is a crucial element in the operation of the electric locomotives that carry millions of passengers every day.





FOR THE PLEASURE OF EVERY- ONE

We develop and produce customized winches for the most demanding customers, whether they need to move large quantities of snow or climb the steepest slopes.

The snowgroomers are assisted by a winch with a cable that can be wound and unwound at the request of the operator, who can work several hundred meters away from their base point. This limits the pressure exerted by the tracks of the snowgroomer on the snow and thus preserves it on the slopes for a long period of time. That is why the PistenBully equipped with 4 to 4.6 ton of winches sets the standard for the preparation and maintenance of ski slopes, cross-country trails and the creation of snow parks.



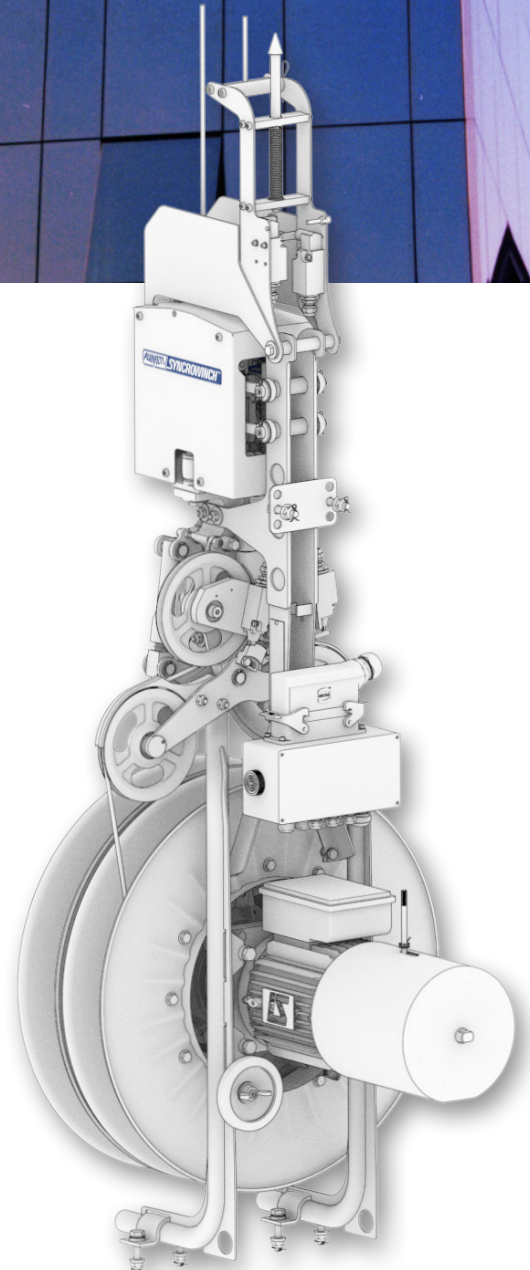
BUILDING



FOR IMPECCABLE FACADES

Because modern architecture becomes increasingly technical, it results in taller and taller buildings with a high concentration of people. It is therefore necessary to use efficient, safe, and certified equipment for the maintenance and cleaning of façades.

Our nacelle winches are used for skyscrapers in New York and Asia. The Syncrowinch SW500 is the essential solution for maximum user comfort and absolute safety for maintenance staff working at heights of up to several hundred meters.





DIGITAL SERVICES



PLUMETTAZ HAS ENTERED THE DIGITAL ERA

With 100 years of continuous innovation in our mechanical solutions, the Plumettaz Group has also entered the digital age. All our new machines sold worldwide are now connected to the Plumettaz cloud to offer our customers the possibility of remote monitoring of their machines.

With the “Remote Monitoring” service powered by our Connect cloud platform, our customers can keep an eye on their machines in the field in real time, from their desktop or smart phone, in order to know where they are and how they are performing.

In addition to this, Plumettaz has developed a unique application to simulate the feasibility of a cable installation before actually going to the site. This service named JetPlanner™ 4.0 allows the user to prepare cable installation interventions, to anticipate possible difficulties, to reserve the right resources, and ultimately to drastically limit the risks of having to stop a cable installation in the middle of a project, which can generate significant costs and also impact the confidence of the end customer.

These new Digital Services further increase the value and the quality of the solutions offered by Plumettaz, by always pushing the technological boundaries further!

OUR PRESENCE

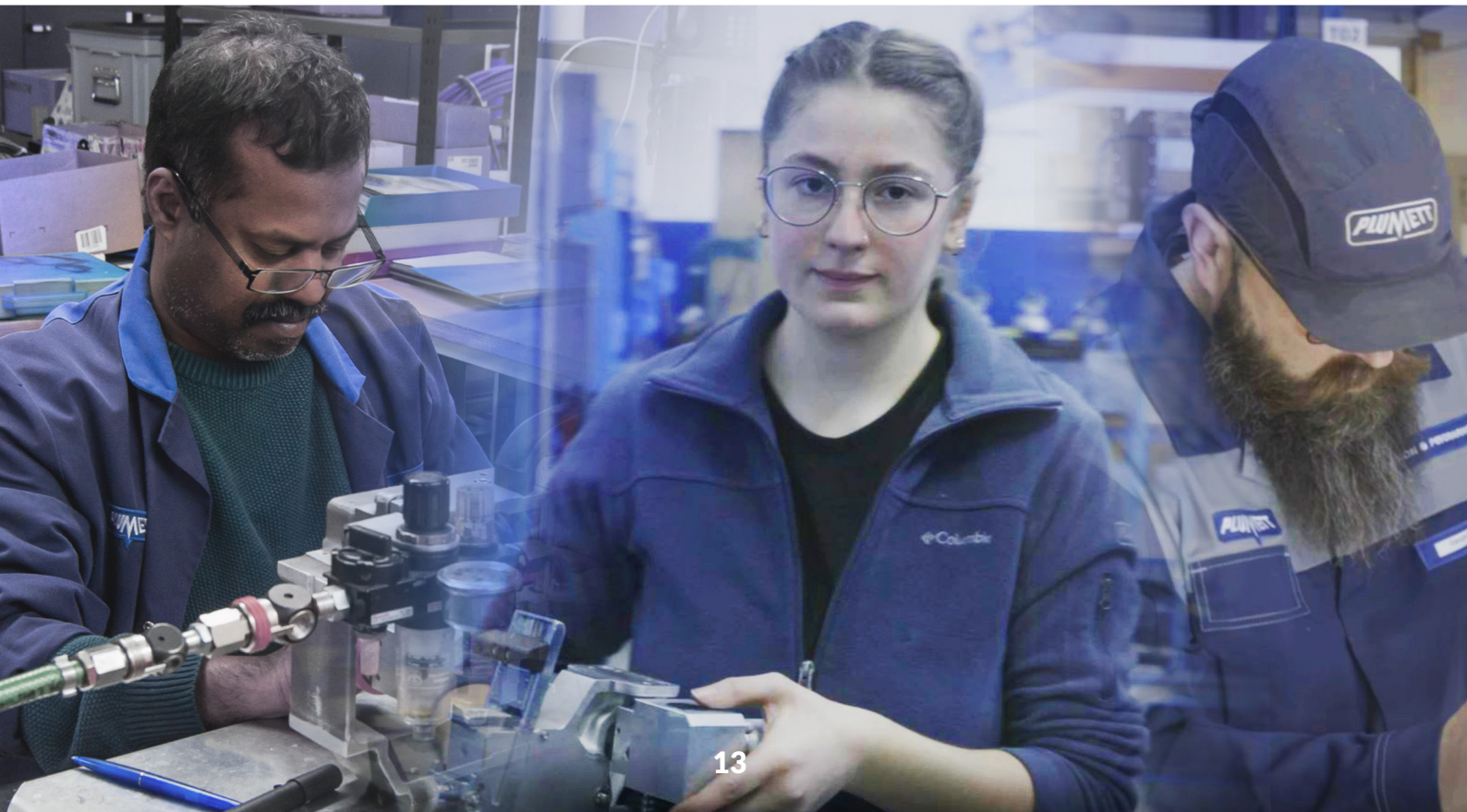
 50 distributors cover more than 100 countries

AFFILIATE
HMS MACHINES B.V.
NETHERLANDS

INFRARENT BV
NETHERLANDS

HEADQUARTER
PLUMETTAZ S.A.
SWITZERLAND

AFFILIATE
PLUMETTAZ AMERICA CORP.
UNITED STATES







www.plumettaz.com