

**menzi  
muck**

**SWISSPOWER** 



We are **Menzi Muck**

## ABOUT MENZI MUCK

# Special machines for challenging work

Innovative and customer-specific walking excavator construction: This has been the hallmark of Menzi Muck AG since 1966. Unique machines that manage the balancing act between stability and agility for work in demanding terrain are our core competence.

With around 250 employees worldwide, supported by our service and sales partners, we are available to our customers everywhere. In addition to our headquarter in Rüthi and three other locations in Switzerland, we are also represented by subsidiaries in Austria, Slovakia, Norway, and the USA.

Menzi Muck walking excavators are successfully used on all continents in a wide variety of applications and bring our customers goal-oriented results within their business areas.

In addition to the international product range, walking excavators and wheeled dumpers, Menzi Muck AG also sells other construction machinery such as crawler excavators, wheel loaders and crawler dumpers throughout Switzerland. Our customers can rely on Menzi Muck's solutions.



### What exactly does innovation mean for Menzi Muck AG?

*Innovation is of paramount importance to Menzi Muck AG. The introduction of new, innovative products and ideas ensures efficiency, solves problems, and changes markets. The generated positive impact supports and promotes the existence of our company.*

Thomas Henke, Managing Director of Menzi Muck AG





## The 7,000th Menzi Muck walking excavator goes to Norway!

As part of a festive event at our headquarters in Rüthi, the 7,000th Menzi Muck was handed over to a customer in Norway. This further deepened the company's long-standing ties to Norway and set another company milestone.



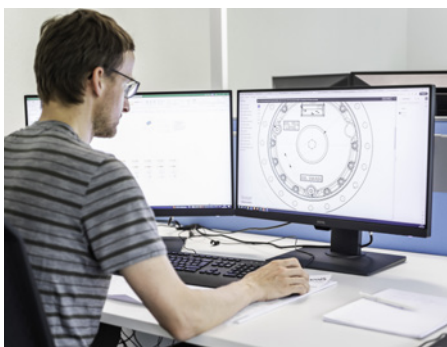
## Present on all continents – even in Antarctica!

Two Menzi Muck A91s were sent to the cold polar region of Antarctica in September 2010. The specifications for this Antarctic project stipulated that the machines had to operate down to -40° Celsius. For our machines – no problem.

### PERFORMANCES

# Where man and machine walk hand in hand

As a medium-sized company, we are close to our customers, suppliers and partners and therefore know their needs very well. In addition to the high quality of our machines, we offer top-class service. Whether you want to buy or rent a construction machine, whether new or used, whether you need spare parts or simply want to learn more about the latest technical solutions – our employees and competent service centres offer you comprehensive services and advice in your area.



#### Technical know-how

Our extensive network and cooperation with institutes, universities and other faculties ensure that we incorporate the latest technologies into the development of our machines. In addition, our development engineers are constantly keeping themselves up to date on the current market situation and new technical achievements.



#### Quality in technology and sales

Whether you want to buy or rent a construction machine, new or used, need spare parts, or just want expert advice, our team is here for you.



#### Service and availability worldwide

The worldwide networking with our partners enables us to be there for you around the clock. Our global service organizations and service technicians at home and abroad are comprehensively and continuously trained and supported by our own team. Your advantage: You receive the latest technology and your desired information directly in the fastest way possible.



## OUR WALKING EXCAVATORS

# The Menzi Muck M5x

Do you want to work precisely on steep slopes with ease? Then get to know our extreme climber! The M5x enables safe working on a slope of up to 45° in the fall line or 30° in the shift line. The patented, intelligent undercarriage concept and a maximum width adjustment of 6 metres also provide special stability.



### Our Specifications

#### Menzi Muck M545x

Continuously variable Vx-Drive drive by Menzi up to 15 km/h  
P-Vation Parallel Support by Menzi  
Four wheels of the same size up to 800 mm wide  
Front and/or rear mountain supports optional  
Weight: from 13,500 kg

#### Menzi Muck M535x

Stepless Vx-Drive drive by Menzi up to 11 km/h  
P-Vation Parallel Support by Menzi  
Hydraulic wheel height adjustment of the steering wheels  
Hydraulic telescopic outrigger  
Weight: from 13,000 kg

#### Menzi Muck M525x

Continuously variable Vx-Drive drive by Menzi up to 15 km/h  
Two demountable stretching axles with impellers  
Hydraulic telescopic outrigger  
Weight: from 12,400 kg



## The M5x at Swiss Post!

In 2021, the Menzi Muck M5x walking excavator proudly represented our company on a limited stamp issue of the Swiss Post.



## OUR WALKING EXCAVATORS

# The Menzi Muck M4x

The M4x is very stable and at the same time exceptionally mobile due to the optimal position of its centre of gravity. Its undercarriage is patented and designed on an X-basis, the wheels can be adjusted horizontally and vertically in parallel. In addition, the arm-force concept ensures maximum efficiency and work performance – with available forces right up to the attachment. The newly designed overhead boom cylinder increases the push-off force to over 200%!

### Our Specifications

#### Menzi Muck M445x

Hydrostatic Menzi H-Drive all-wheel drive

P-Vation Parallel Support by Menzi

Four wheels of the same size up to 710 mm wide

Front and/or rear mountain supports optional

Weight: from 11,500 kg

#### Menzi Muck M435x

Hydrostatic Menzi H-Drive all-wheel drive

P-Vation Parallel Support by Menzi

Hydraulic wheel height adjustment of the steering wheels

Hydraulically telescopic outrigger

Weight: from 11,400 kg

#### Menzi Muck M425x

Hydrostatic Menzi drive

Two removable thru axles with impellers

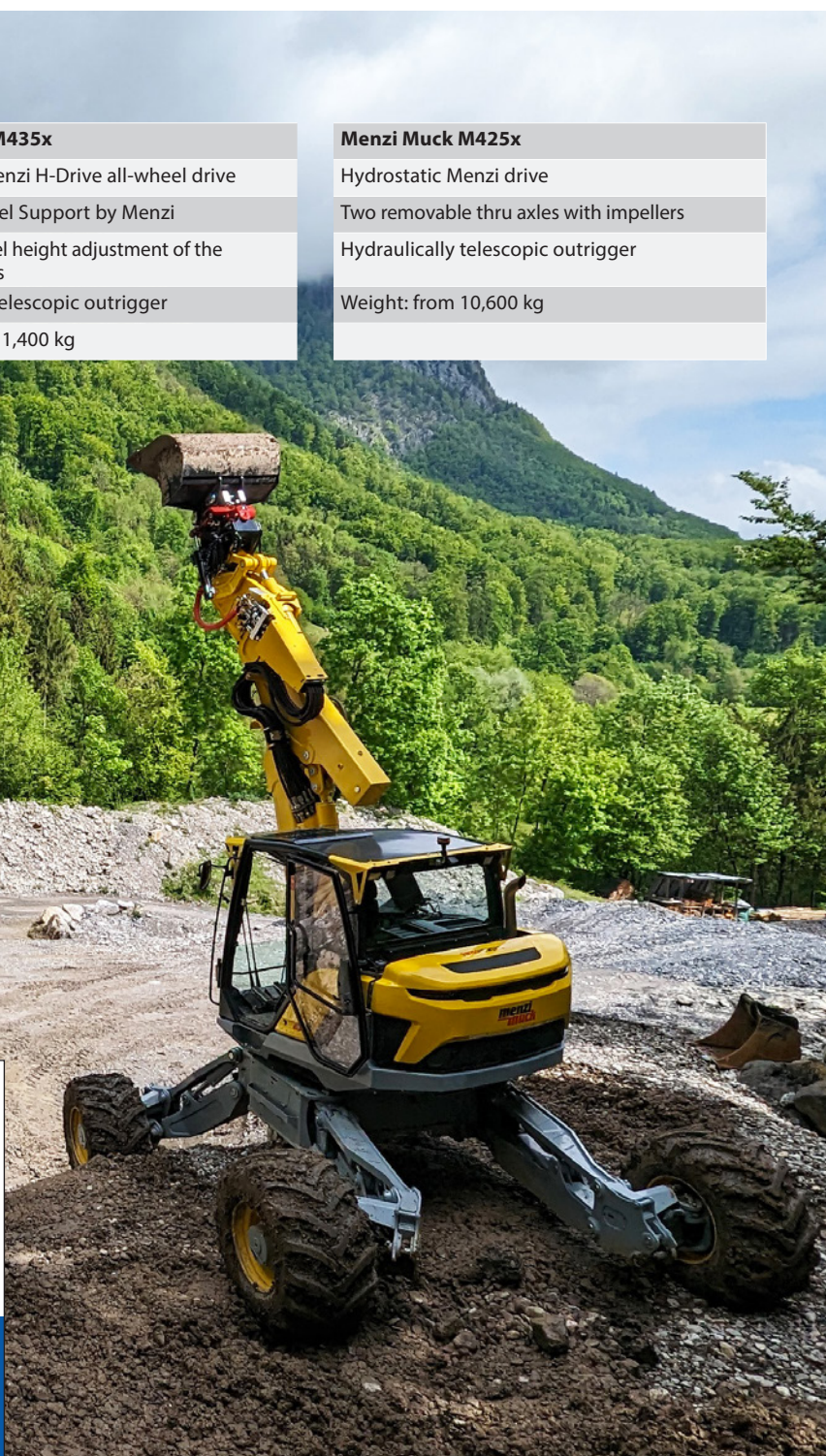
Hydraulically telescopic outrigger

Weight: from 10,600 kg

# HENGSTLER

HENGSTLER HYDRAULIKZYLINDER:  
ENGINEERED AND MADE IN GERMANY

Schätzlestraße 2 - 8, 77756 Hausach, Deutschland  
+49 (0)7831-801-0  
[www.hengstler-zylinder.com](http://www.hengstler-zylinder.com)







## OUR WALKING EXCAVATORS

# The Menzi Muck M2

As an economical alternative for demanding applications, the M2 offers a special advantage: Thanks to its sophisticated assembly concept, it can be dismantled for transport in just a few steps. It can then be transported to the site of use in the desired package size by helicopter, cable car, or crane. The mobile walking excavator is equipped with a 75hp 4-cylinder turbo diesel engine that meets the latest emission standards.

### Our Specifications

#### Menzi Muck M220

Two-stage drive with self-regulating parallel steering

Two removable thru axles with impellers

Hydraulically telescopic outrigger

Weight: from 7,100 kg

Maximale Zuverlässigkeit  
unter extremen Bedingungen.

**Lösungen für mobile  
Arbeitsmaschinen.**

**ifm** – close to you!







# Applications and areas of application

Menzi Muck stands for technology leadership in walking excavator construction. The special excavator concept, which does not require a counterweight and thus ensures high performance with a low operating weight, can be used for all common excavator applications.



## Modern and efficient forestry

The Menzi Muck as a harvester makes it easier to harvest wood in difficult terrain. Targeted thinning and clear-cutting are among its many possible applications in forestry. There are no obstacles in the way of the adaptable chassis, the powerful all-wheel drive, and the walking function – the harvester even overcomes gradients of more than 100%!

With our extensive range of excavator accessories, the range of applications and capacity utilisation can be further increased. Due to the simultaneous low weight and high performance, there are ecological advantages, e.g. in the area of soil pressure, the protection of the forest floor and the reduction of stand damage. The flexible and highly movable chassis results in additional ecological advantages.



## Sustainable water and municipal management

Working in bodies of water requires special consideration for the environment. That's why our Menzi Muck uses biodegradable hydraulic oil. Without additional equipment, it can work in streams and rivers up to a water depth of 2.2 meters.

With additional equipment adapted to the depth of the water and the subsoil, it works safely and efficiently. Thanks to the optimal weight distribution and the enormous stability, it is possible to work in swamps, narrow channels or raging waters without hesitation. Larger obstacles are climbed over, and the flexible chassis adapts to the uneven ground.

The high hydraulic output power also supports high-performance attachments such as mulchers and stump grinders.



# ROTOTILT®

Making it possible since 1986





### More power for complex foundation engineering

As a carrier device for various drilling systems, the Menzi Muck impresses with its high performance and low dead weight. With excellent lifting capacities, it can handle drill rigs up to approx. 2500 kg. In combination with simple and lightweight systems for blast hole drilling and self-drilling anchors on steep slopes, as well as in professional foundation engineering with complex drilling systems, the enormous lifting capacity and sensitive hydraulics enable efficient and precise work.

The small footprint and the minimal swivel radius also allow the use of several machines in the tightest of spaces, e.g. in mining.

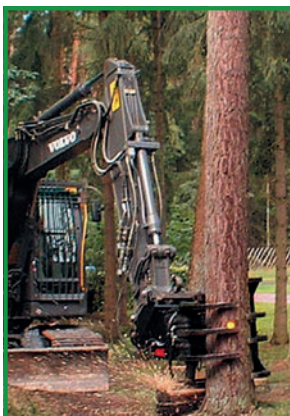
### The Menzi Muck is used with a wide variety of drill rig types:

- Excavation pit protection
- Securing roads, routes, embankments, and slopes
- Anchoring in ski resorts, forest road construction, road construction
- Erosion control
- Rockfall, avalanche and torrent barriers
- Anchor points for snow groomers and dams
- Blast holes for construction sites, ski slopes, snow-making pipes
- Drainage in landslides and swamps
- Wall renovations (core drilling)
- Foundation foundations (e.g. for electricity pylons, cable car masts, etc.)
- Underground or tunnel construction



### Track construction: your first choice for 2-way machines

The Menzi Muck M545x road-rail excavator is a specialized piece of equipment that has revolutionized the road-rail sector. The ability to enter and exit at any point along the railway line makes track work much more efficient. The ease of use and easy replacement of the two-way system bring further advantages.



**Maschinen, Vertrieb u. Dienstleistungen**

Jens-Peter Bruhn • Tel.: 04550-98 57 97 • Fax: 04550-98 57 21  
Mobil (+49) 0175-7 24 66 94 • jens@mvd-technik.com • www.mvd-technik.de





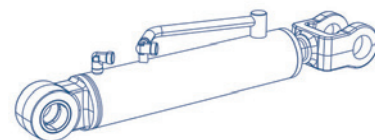
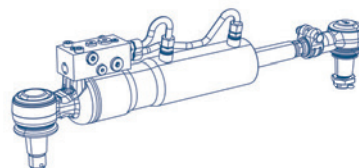
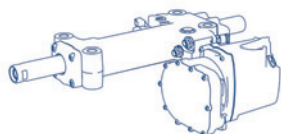
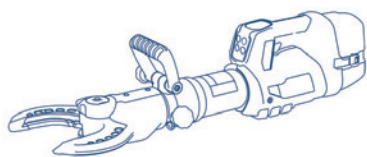
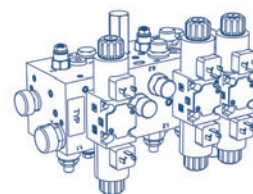
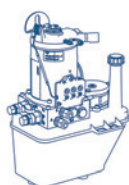
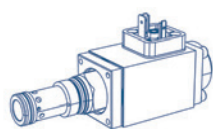
## LEADERSHIP IN **HYDRAULIC** SOLUTIONS

WEBER-HYDRAULIK GMBH is a leading international specialist for customized and reliable hydraulic solutions. Reliable and powerful, the family-owned company has been developing high-quality cylinders, control blocks, steering and suspension systems, valves and power units for mobile machinery, commercial vehicles and machine tools as well as rescue equipment for over 80 years - an unbeatable portfolio of services for movement, power and dynamics.

The construction segment is an important sector for the hydraulics specialist. Construction machinery, with all its individual components, is often exposed to extreme con-

ditions in practical use. For this reason, an application-specific design that takes all relevant factors into account is essential for hydraulic cylinders. Growing demands for stability, comfort and flexibility also require the continuous development of optimized solutions.

With the help of intelligent function integration, a contribution can be made to increased energy efficiency despite increasingly powerful machines. With target-oriented engineering and state-of-the-art manufacturing processes, WEBER-HYDRAULIK produces cost-efficient series components and complete systems tailored for use in construction machinery.





## COMPACT MACHINES

# Construction machinery for small and large tasks

In addition to the own walking excavator products and the 45rd/65rd wheeled dumpers, Menzi Muck AG sells an extensive portfolio of construction machinery and attachments exclusively on the Swiss market. These include crawler excavators up to 10 tons, from the manufacturers KATO and Eurocomach, dumpers from the manufacturers KATO and IHI and wheel loaders from the manufacturer Weycor.

### Wheel loader

Our wheel loaders from Weycor keep the promise of German engineering. The wheel loaders of the various weight classes, all with articulated steering, are used for material transport or winter service and are optionally available as a quick-rotor version with a speed of up to 40 km/h.



### Crawler excavator

The all-rounders up to 10 tonnes are convincing on any construction site. As "best in class," they offer reliable solutions for a wide range of tasks and applications.



### Wheel dumper

Our self-developed wheel dumpers impress with their performance, quality, and user-friendliness. The two wheel dumper types 45rd and 65rd are equipped with powerful engines that provide sufficient drive both on the construction site and off-road – and fully loaded.



### Crawler tippers

Handy, reliable and compact, our crawler tippers do their job. The Menzi range of crawler tippers offers various bodies, chassis, and engine variants. The machines meet the high demands of professional use and have proven themselves in practice over

the long term. The Menzi crawler tippers are characterised by their robust design and powerful travel drives. The fully hydrostatic drives guarantee almost wear-free operation.







Follow us.



[www.menzimuck.com](http://www.menzimuck.com)



[menzimuckcom](https://www.instagram.com/menzimuckcom)



[menzimuckcom](https://www.facebook.com/menzimuckcom)



[Menzi Muck AG](https://www.linkedin.com/company/menzi-muck-ag)



[menzimuckcom](https://www.youtube.com/menzimuckcom)

Menzi Muck AG · 9464 Rüthi/Switzerland  
T +41 71 727 12 12 · [info@menzimuck.com](mailto:info@menzimuck.com) · [menzimuck.com](http://menzimuck.com)  
Ein Unternehmen der Menzi Muck Gruppe